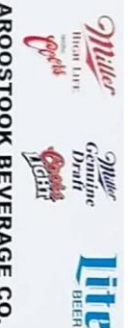




Community Banking at its Best!

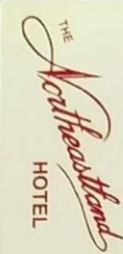
Member FDIC



Rate	1	2	3	4	5	6	7	8	9	OUT
Blue Tees 21.4/11.9	352	416	384	169	427	403	546	155	476	3328
White Tees 69.0/11.5	322	400	367	155	410	394	473	146	465	3132
Gold Tees 67.2/11.2	322	343	351	155	310	331	473	146	465	2896
Par	4	4	4	3	4	4	5	3	5	36
Handicap	13	3	9	15	1	5	7	17	11	

Matches + -  
Matches + -

Black Tees 65.2/10.8	310	343	351	125	310	331	415	136	415	2736
Red Tees 72.0/12.5	310	343	351	125	310	331	415	136	415	2736
Par	4	4	4	3	4	4	5	3	5	36
Handicap	13	1	9	17	7	3	5	15	11	



436 Main Street  
Presque Isle, Maine 04769  
207-768-5321  
FAX 207-764-1720  
In Maine  
800-244-5321



EMHS MEMBER



Dove Caron  
769-9540  
Lawn & Property  
Maintenance, Inc. 769-9312  
Scott Caron

10	11	12	13	14	15	16	17	18	In	Tot	Hcp	Net
390	376	620	402	396	571	114	202	352	3423	6751		
376	334	510	364	387	476	105	191	342	3085	6217		
293	334	510	364	311	476	105	190	342	2885	5781		
4	4	5	4	4	5	3	3	4	36	72		
10	12	6	8	2	4	18	16	14				

293	317	429	306	311	427	101	136	331	2651	5387		
4	4	5	4	4	4	5	3	3	4	36		
10	8	6	12	2	4	18	16	14				

DATE \_\_\_\_\_  
SCORER \_\_\_\_\_  
ATTEST \_\_\_\_\_



1. USGA Rules Govern All Play.
2. Out of Bounds - Beyond all posted white stakes.
3. Allow faster players to play through.
4. Power carts are not to pass the white poles in the fairway; continue on cart path or rough.
5. Keep all pull carts off greens, aprons and tees.
6. Please repair ball marks on greens, rake sand bunkers and replace divots.
7. PROPER GOLF ATTIRE REQUIRED.

PRO SHOP: 764-0430 RESTAURANT: 769-7431

Golf Pro/Manager: Barry Madore  
Course Superintendent: Phil Pelletier

35 Parkhurst Siding Rd.  
Presque Isle, ME 04769  
www.picountryclub.com

